



GREEN  
PANTHER  
PROPERTIES®

ONE

An aerial photograph of a lush green forest. A winding river flows through the upper left portion of the image. The trees are dense and vibrant green, with some taller, thinner trees visible. The overall scene is bright and natural.

**I N S P I R I N G  
N A T U R E L I V I N G**



**THE MOST MAGNIFICENT  
WAY OF LIFE IS TO  
COEXIST WITH NATURE**



**GPP ONE**

---

THE PROJECT

A woman with dark hair, wearing a white sleeveless top, is holding a young child in her arms. The child, wearing a yellow and white checkered dress, is reaching up to touch a small yellow flower on a green vine. They are both looking upwards with interest. The background is a lush garden with green leaves and yellow flowers, creating a soft, natural setting.

**BE A PART OF  
THE LIMITED  
EDITION  
COMMUNITY**



A one-of-its-kind, exclusive community of handcrafted villas that personifies eco-luxury.

GPP One is an ambitious attempt, driven by passion, to develop a highly distinguished community of avid nature dwellers and ultra-luxury lifestyle connoisseurs. Unlike other gated communities, it is a plush assemblage of mindfulness, abundance, sophistication, aesthetics and sustainability.

Set in the expanse of nearly 70,000 sq. yds. (and still growing), GPP One is the premium plotted development project near Ahmedabad. The project dwells on sheer exclusivity by offering large plot area accomplished with bespoke villas and customised landscaping (within the scope of project's architectural and landscaping standards). A feature you will find nowhere else! The community is enveloped in dense flora, lining the entire stretch of the land. What further sets the project apart from the rest is the intense eco-consciousness with which it is conceived to inspire nature-living without compromising on luxury quotient.

[Tap here to view project film](#)





- 01 ENTRY ROAD
- 02 NARMADA CANAL
- 03 ENTRY GATE
- 04 12M WIDE MAIN ROAD
- 05 NATIVE FLOWER GARDEN
- 06 HERBS GARDEN
- 07 FRUIT ORCHARD
- 08 YOGA DECK
- 09 EARTH SHIP AND SURROUNDINGS
- 10 LAKE
- 11 GOCHAR LAND
- 12 FARMING LAND
- 13 FUTURE EXPANSION

Disclaimer: This is an Interim layout for visualisation. Final layout is subject to change based on plan passed by respective authorities.



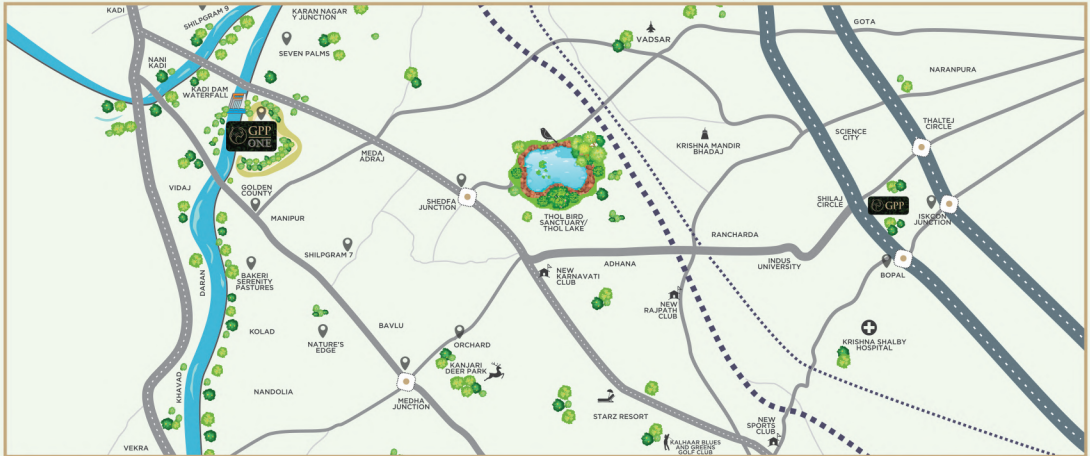
- 01 WATER TANK AND OBSERVATION DECK
- 02 RAIN WATER HARVESTING TANK
- 03 AMPHITHEATRE
- 04 SOLAR PANELS AND SKYWALK
- 05 JUICE BAR
- 06 SWIMMING POOL
- 07 FOREST GAZEBO
- 08 NATURE TRAILS
- 09 INDOOR SPORTS AND GAMES
- 10 LAKE
- 11 BUTTERFLY PARK
- 12 TUNNEL GALLERY
- 13 AROMA GARDEN
- 14 TV LOUNGE AND MEETING ROOM
- 15 COMMON LAWN
- 16 PARKING
- 17 CHILDREN PLAY AREA
- 18 MULTI-SPORT COURTS
- 19 TEA LOUNGE AND LIBRARY
- 20 OUTDOOR GYMNASIUM

## WHERE IS GPP ONE LOCATED?

GPP One is enviably perched on the bank of 70M wide Narmada Main Canal and is gifted with nearly half-kilometre canal frontage, an acre of natural lake that brims with water throughout the year and 50 acres of lush green pastures (gochar land) as its neighbours.

### DISTANCE FROM GPP ONE SITE

- 📍 Kadi : 9 Km
- 📍 Thol : 17 Km
- 📍 Shilaj Circle : 32 Km



Disclaimer: This map is not to scale.

[Tap here to view location on google map](#)

## CURIOUS ABOUT HOW GPP ONE ELEVATES YOUR LIVING?

### **House of Life -**

bespoke luxurious nature-villas

---

### **Homegrown Amazon -**

dense treeline across the terrain

---

### **Native Neighbours -**

flora, fauna and flavours of nature

---

### **The Lake -**

an acre wide aqua-body for one and all to fall in love with

---

### **Fitness and Fun Routes -**

parallel jogging paths, dedicated cycling tracks, walking trails

### **Serenade Station -**

dedicated park for the birds to stay, sing and spread music of joy

---

### **Coolers and Soothers -**

flower garden and herb garden on the way

---

### **Grow Your Own Food -**

poly net house for organic produce at individual level

---

### **Salad Bar -**

the goodness of fresh veggies and fruits straight from our farm and orchard

---

### **Bookworms' World -**

library for the bibliophiles

### **Pool by The Lake -**

infinity pool on the edge of the lake

---

### **Grab-a-Glance -**

observation deck to bask in the great views of the canal and Kadi dam waterfall

---

### **Biodiversity Subway -**

a playful transit through the interesting stories of flora and fauna of GPP

---

### **Earth Ship -**

a contemporary, amenity-rich club house to connect, explore and indulge

BREATHE IN THE SERENITY OF EVENINGS.





CHERISH YOUR EXCLUSIVITY.



FEEL THE PEACE IN THE AIR.



WATCH THE LAPWINGS AND EGRETS BASKING IN SUN.



EXPLORE YOUR WAYS TO UNWIND.





BLOW OFF SOME STEAM ON THE COURT AFTER A TIRING WEEK.



STROLL THROUGH GORGEOUSNESS.



# GPP | ONE FEATURES

## Sustainability

- Solar Panels
- Rain and Surface Water Harvesting
- Use of Sustainable Materials
- Percolation Wells
- Green Building Practices
- Sustainable Design
- Green vs Grey Ratio of 9:1

## Biodiversity

- Creating Biodiverse Ecosystem
- Promoting Native Plantation

## Key Features

- 24 Hours Security and Surveillance
- 24 Hours Free Water Supply
- RCC Roads
- Garden Maintenance
- House-Keeping
- Premium Community Living
- Ease of Access
- Lake Facing Community

## Food Growing

- Organic Food Growing
- Fruit Orchards

## Mental and Physical Health

- Away from Hustle and Bustle
- Improved Air Quality
- Cooler Micro-climate

## **NOBODY PAYS FOR ELECTRICITY AT GPP ONE.**

GPP One harnesses this superpower that we are endlessly gifted with. We are making humongous investment to set up solar plants at project level that will fully meet the power needs of all the common amenities for lifetime. These solar plants will also meet energy consumption needs for supplying high pressured water to villas and common premises. Further, each villa will be empowered with rooftop solar panels to supply sufficient electricity that the villa requires. And, all this is planned in a meticulous way taking possible deficit of cloudy days into consideration.

Our aim is to reduce carbon footprint caused by fossil fuel-based power generation and simultaneously become self-reliant in power generation so that the dwellers don't have to pay even a dime for power.

Community Powered by Solar Energy

Self-Sustaining Power Generation at Community and Villa Level

Reduced Carbon Footprint



## **NOBODY PAYS FOR WATER EITHER!**

Rampant extraction of water from the earth without any efforts to replenish this significant life source has only been pushing the groundwater levels down at an alarming pace.

GPP One is conceived to be built with the principles of sustainability at the core. We are determined to give back what we take from Mother Earth. While we will be extracting water from one hole - borewell, we will be replenishing it through a dozen other holes - the percolation wells; thus ensuring maintenance of adequate water level under the ground. We would also be relying on rainwater harvesting through roof surfaces of common areas.

We are eliminating the need for individual borewells by hugely investing in centralised water management system.

While water is free per se, there are inevitable capital and operating costs associated with bringing water to your tap. Normally, you would spend heavily on borewell, underground storage tank, overhead tank and pressure pump and also incur monthly expenditure to operate the pumps, which consume much energy. But not here! We are eliminating all of these expenses by refusing to dig individual borewells at villa level and by building a 24 metre tall overhead tank that will ensure every villa gets pressured water in their taps. And, as the pressure pumps are powered by solar energy, nobody pays for water, ever.

**Centralised Borewell**

**24 Metre Tall Overhead Tank**

**Rainwater Harvesting**

**Pressure Pumps Powered by Solar Energy**

**24x7x365 Water Supply**





**IT'S VERDANT, AND  
NOT JUST GREEN.**

GPP One is not just another community with randomly installed trees and scattered garden areas to add that soothing green colour to the canvas of life lived there. We are not competing with standard projects in any way. We are thinking beyond the colour. We are developing a verdant community, a community that is bestowed with opulence of vibrant plant life by growing enormous amount of plants, trees and vegetation. We are creating a mini-amazon forest, if that helps you visualise our idea of building an invincible green cover for the project. We

are aiming at reducing the intensity of heat, especially in summers, with the help of tremendously dense treeline and vegetation that will block the harsh rays of the sun and keep the community's micro-climate cooler than the outside world. In line with our sustainability principles, we are committed to grow native plants, which are hardy, consumes relatively less water and supports the needs of native fauna - thus creating an environment for bio-diversity to flourish. We have also chosen a wide variety of fruit

trees, among plethora of others, with a futuristic thought of providing the community with the benefit of delicious and organic fruits for years to come.

Growing trees, followed by more trees, and more trees, is set to be the ritual of GPP One. Having said that, we are committed to persistently plant variety of florae every monsoon and grow our verdure. Here's a small list of trees and plants we plan to grow in your plot and in community spaces.

#### MEDICINAL TREES

Salvadora Persica (Piluudi)  
Putranjiva  
Neem  
Mahua  
Acacia Catechu  
Bael (Billi Patra)  
Ailanthus Excelsa  
Moringa Oleifera (Drumstick)  
Albizia Lebbeck (Siris)  
Pongamia Pinnata  
Kailashpati  
Bombax Ceiba  
Acacia Leucophloea  
Melia Azedarach (Bakain)  
Kadi Patta  
Reetha

#### TREES FOR BIODIVERSITY

Mimusops Elengi (Mausari)  
Peltophorum  
Amaltas  
Albizia Saman  
Ficus Religiosa (Peepal)  
Mysore Fig Tree  
Kadam  
Terminalia Arjuna  
Terminalia Catappa  
Terminalia Mantaly  
Dalbergia Sissoo  
Butea Monosperma  
Acacia Tortilis

#### FRUIT TREES

Mango  
Chikoo  
Pomegranate (Anar)  
Coconut  
Tamarind  
Guava  
Jamun  
Sitafal  
Amla  
Papaya  
Lemon  
Banana  
Mulberry  
Ber  
Star Fruit  
Wood Apple (Kotha)  
Jungle Jalebi

#### FLOWERING TREES

Cordia Sebestena  
Gulmohar  
Spathodea  
Tabebuia Rosea  
Tabebuia Argentea  
Lagerstroemia Speciosa  
Bottlebrush  
Erythrina Indica  
Bauhinia  
Ceiba Speciosa (Silk Floss Tree)  
Jacaranda

#### FRAGRANT TREES

Alstonia Scholaris (Saptaparni)  
Millingtonia Hortensis (Akash Neem)  
Parijat  
Champa  
Sita Ashok

#### GRASSES

Gajraj (Elephant) Grass  
Fountain Grass  
Ghoda Grass  
Green Cane Bamboo  
Golden Bamboo

#### TROPICAL PLANTS

Areca Palm  
Rhapis Excelsa  
Chamaedorea Palm  
Buddha Belly Bamboo  
Dieffenbachia  
Aglaonema  
Calathea  
Spider Lily  
Swamp Lily  
Peace Lily

#### HERBS

Tulsi  
Aloe Vera  
Ajwain  
Lemon Grass

#### FLOWERING SHRUBS AND CREEPERS

Bougainvillea  
Gultora  
Ixora  
Tecoma Gaudi Chaudi  
Tecoma Capensis  
Stachytarpheta Indica  
Plumbago Capensis  
Raat Rani  
Jasmine  
Hibiscus  
Thevetia  
Nerium

PLANT CARE IS INCLUDED IN THE MAINTENANCE PACKAGE.



**NATURE-VILLAS**

---

THE FIRST LOOK

DISCOVER  
WHOLESOME  
GRANDEUR  
OF HOUSE  
BEYOND WALLS



---

EURASIAN HOOPOE CLICKED AT SHOONYA



TO SIT IN THE SHADE AND LISTEN TO THE SERENADE,  
TO LAZE IN THE GRASS AND GAZE AT THE STARS,  
TO DWELL IN THE BEST OF BOTH WORLDS,  
IS THE MOST PERFECT LUXURIES OF ALL.



## THE HOUSE OF LIFE

You may call it a luxury villa, a weekend home or the great escape. We are designing it as a life house – the house where one can come back to life in its natural form; where one can come back to life in all its glory.

You have a majestic 2,000+ sq. yds. of vast canvas to have us design bespoke nature-villas for you and your family. The villas at GPP One will stand a testimony to minimalistic yet aesthetic architecture interspersed with native trees, plantations and flowers attracting plethora of fauna – thus creating an environment of glorious coexistence of man and nature. And, we have already invited the bees, the birds, the butterflies and a whole lot of Life.

WHERE DO NATURE VILLAS GET ALL ITS UNIQUENESS FROM?



THE SUN. THE WIND. THE VASTU.



Each villa promises a distinct design as all the dwellings are designed and constructed in accordance with the sun path and wind directions. We are constructing villas with much thoughtfulness to ensure you enjoy more of natural lighting and

cool breezes, which eventually translates to reduced consumption of power for a true sustainable living. Also complying with a significant Vastu rule, none of the villas will be south facing; and that's a given.



## YOUR VILLA. YOUR REFLECTION.



Every corner of your to-be villa is pleasing to the eyes and drenched in sophistication. While we understand our terrain, we also understand your lifestyle needs. Here, we try to blend your lifestyle with that of nature's in an elegant way.

Full-service Villas with all grey and garden area maintenance taken care of

Personalised Design with one / two level(s) as per need and choice

Variety of Native Plantations for a sustainable and yet stunning garden for generations to come

Water Bodies to further diversify ecosystems and add a stroke of eco-luxury

Designer Rooftop Solar Panels because no one ever said they have to be boring

Abundant Sunshine and Wind to make each day feel beautiful

Native  
Trees and  
Plants,  
Lily Pond

Biodiversity

100M

Walkway  
Fresh Air  
Loads of  
Sunlight Cool  
Breeze Peace  
of Mind

Mental and  
Physical  
Health

Sustainability

Solar Powered Property  
EV Charging  
Rated Green Building

## NATURE-VILLA FEATURES

Fruit Orchard  
Organic Food  
Growing Area

Food  
Growing

Utilities

24x7 Water Supply  
2 Car Parking  
Ready Plug 'N' Play  
Electrical and IT Features  
Quality Flooring  
Quality Electric Fittings  
Quality Bathroom Fixtures  
Sun Shades  
DIY Feature Opt in / Out

Recreation

Gazebo  
Deck by the Water  
Customised Campfire



## **YOUR VILLA. YOUR SIGNATURE.**

We will be excited to help you give your villa your personal touch. Choose to add more features in your villa and nurture your varied interests. We are building bespoke dwellings that are crafted with not only sustainability principles at core, but also with your housing preferences and interests in mind.

### **OPT-IN / OPT-OUT FEATURES**

Swimming Pool

Polynet House (to grow food you like)

Machaan / Shack House

Tunnel House

Large Water Body

Extended Solar Panels

Servant Quarter

YOUR VILLA. YOUR GRANDNESS.



Your villa is your space. It must be fit for you in all ways. It should be as grand as you like or as cozy as you want it to be. We have hence created flexi-options for you to choose the size of your abode based on your requirement and purpose.

If you are thinking of making it a second home for the entire family to cherish an extended stay away from home, you may opt for a 2 bed-room house. You may also convert your living room

If you are someone who is thinking of adopting minimalistic life, or if you have a small family and intend to only visit over a weekend, or if you are a nature's person who likes being outdoors more than indoors; then you may opt for a 1 bed-room villa to get a cozy yet luxurious experience.

---

**Once built, your villa must breathe freshness of your unique touch. We have hence deliberately kept our hands off designing the interiors only to have you heartily decorate all your spaces to reflect your distinct persona. The views of interiors you will see in the following section of this book have been presented for your visual idea and understanding of the aspects of your villa.**





YOUR VILLA. YOUR SPACE.



You are going to hold a brilliant amalgamation of aesthetics and functionality.



Give your exquisite personal touch to every corner of your oasis.



Choose to be minimalistic or go elaborately lavish in adorning your haven.



Style your abode with all the sweet things that your little ones' heart desires.

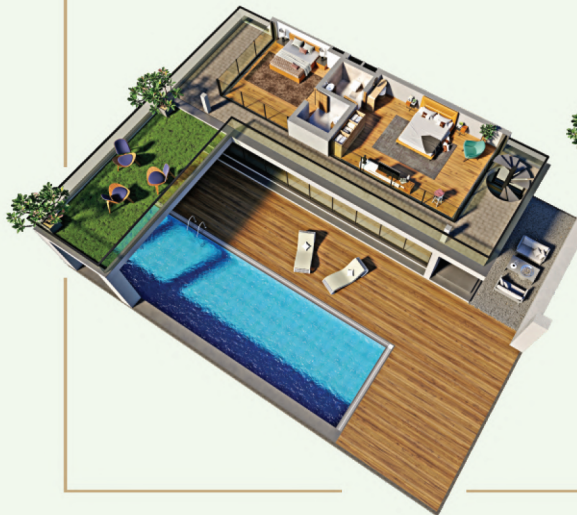
SPECIALLY CURATED INTERIOR ARRANGEMENT



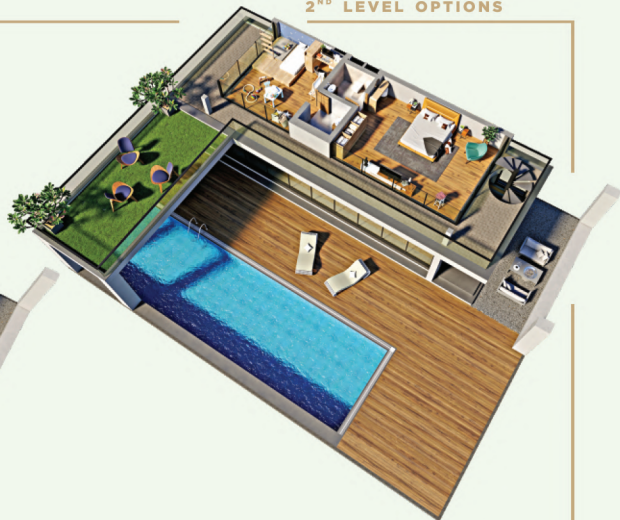
1<sup>ST</sup> LEVEL OPTIONS



## SPECIALLY CURATED INTERIOR ARRANGEMENT



## 2<sup>ND</sup> LEVEL OPTIONS



[Tap here to watch the video of different interior arrangements](#)



**SHOONYA**

---

OUR INSPIRATION

PEEK INTO  
THE BLISS  
BROUGHT  
TO LIFE



---

PAINTED GRASSHOPPER CLICKED AT SHOONYA

**IN NOTHINGNESS LIES THE CORE OF EVERYTHING**

**THAT LIFE SEEKS FROM NATURE - THE JOY, THE PEACE,**

**THE HARMONY, THE CALM AND THE SENSE OF FULFILMENT.**

**IN NOTHINGNESS LIES THE CORE OF SHOONYA.**

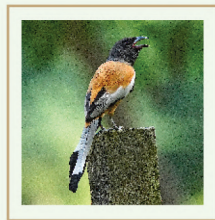




Follow [@shoonya\\_farm](#) on Instagram to catch glimpses of nature-living at Shoonya.

The great inspiration behind promoting eco-luxury lifestyle lies in the enriching journey of creating Shoonya. Shoonya was a close experiment of nature living. It took more than 5 years of research to develop a piece of one acre land into a nature-driven habitat that brims with biodiversity.

Crafted with minimal yet elegant architecture and accompanied by luxurious amenities, this personal farm cum second home of the founder of Green Panther Properties is visited by 70+ bird species and 50+ species of fauna, while it is home to 50+ varieties of plants and trees. It is a place where lavishness is captivatingly interwoven with nature's bounty to experience the



Tap here to watch the film -  
['Birds of Shoonya'](#)

## FROM BARREN TO BOUNTIFUL - THE JOURNEY OF SHOONYA

The story began with a dream and a barren patch of land. With no source of water, our only opportunity was getting the rainwater to stay on our land. We started rainwater harvesting. We also remodelled the path of flowing rainwater to create a lake. The result? Increased ground water levels, more moisture in soil and consequent reduction in intake of water by our plants.

Next, we moved to paint the land green. We grew dense border vegetation using native shrubs and some fast growing creepers alongside large, flowering and fast growing trees. To ensure our land remained green, we grew ground covers comprising a variety of flowering, ornamental and shade loving shrubs and large leafy varieties of creepers.

Going a step further, we began growing our own food, organically. We planted some fruit trees (like badam, chiku, jamun, guava, pomegranate), some veggies (like bottle gourd, egg plant, tomatoes, raddish, garlic, spring onions), some leafy greens (like spinach, methi, coriander) and some herbs (like

basil, ajwain, lemongrass, meswak, billipatra). We were determined to keep our farm chemical-free and so we made organic compost with the kitchen waste, while neem leaves became our herbal pesticides.

When we began constructing our abode, we focused on our singular need - to be able to enjoy being outdoors and feel the sense of freedom that city life failed to offer. Hence, we built no walls. We designed a glass house with verandahs, decks and balconies eliminating the distinction between the inside and the outside.

We chose minimalism as our design approach. We used no embellishments, no cladding materials of any kind to keep it quaint and aesthetic. We elevated the upper level with the help of steel beams and columns in a record single day! The entire structure was designed to ooze fluidity with seamlessly enwrapped interior and exterior spaces for indulgence and relaxation.

Shoonya is a surreal reality now that has become a source of



Tap here to watch  
the journey of Shoonya



2020



**GREEN PANTHER PROPERTIES  
(GPP)**

---

INSPIRING NATURE LIVING


IN ORDER TO CREATE  
A BETTER TOMORROW  
SOMEONE HAS TO  
BEGIN DOING THINGS  
THE RIGHT WAY  
AND THE BEGINNING  
HAS BEEN MADE



## NEED OF THE ERA - SUSTAINABILITY

At GPP, we believe that the root of the pandemics and the climate change disasters that humans are facing is - 'Mindless Indulgence.' We have stopped listening to the nature around us. It is calling us, urging us, reciprocating to our deeds and even threatening us. We have stopped respecting the boundaries that nature has drawn. Be it water, be it the soil, be it the air, or be it the trees; we have left no stone unturned to exploit nature.


With the concept of nature-living, GPP is attempting to create a milestone where good practices that are sustainable in nature are respected. We strive to create spaces where nature can breathe freely just beside us. We endeavour to give every bug, every bee and each living being a fair chance



[Tap here to watch our problem statement](#)



**THE IMPACT OF YOUR WORK IS  
THE PRODUCT OF YOUR CARE,  
CONVICTION AND CONSCIOUSNESS.**

A close-up photograph of a person's hands hugging a tree trunk. The hands are positioned on either side of the trunk, with fingers spread against the rough, textured bark. The background is a soft-focus forest with green foliage and a large, dark rock formation on the right. The lighting is natural, highlighting the texture of the tree bark and the skin of the hands.

**YOU ARE NOT LIVING  
GRACIOUSLY ENOUGH  
UNTIL YOU ARE SOAKED  
IN ABUNDANCE OF  
NATURE, COMFORT  
AND CONSCIOUSNESS.**

## WHO WE ARE?

Before we answer the question, we take the liberty to tell you who we are not. We are not the ordinary builder merely selling a piece of land in the form of a plot. We are not among those developers who think of short term gains and deliver mediocre projects. We are not the ones who sell barren plot in the name of a farm house.

## WHAT WE DO?

We create an experience of living a high life with elevated consciousness. We develop premium lifestyle spaces around nature, abiding by the core principles of coexistence and sustainability.

Distinctness is our key trait. We keep it simple, minimal, elegant, while we accentuate comfort, functionality and aesthetics in our designs.

## HOW WE DO?

GPP is guided by a holistic set of sustainability principles. These principles pertain to solar energy, water harvesting, growing food, sustainable design, native plantation and eco-friendly materials, and they are the pillars of present and future projects of the company.

## WE ARE GREEN PANTHER PROPERTIES (GPP)

We are a specialised real estate development company focused on inspiring nature living. We are ardent admirers of nature inclined to redefine luxurious living. And hence, we are promoting a life that is both sumptuous and sustainable. We are here to create communities of like-minded nature dwellers who strive to reduce their carbon footprint and live a beautiful life in an eco-friendly way.



## **THE CORE OF OUR EXISTENCE-COEXISTENCE**

The phenomenon of coexistence is sadly underrated and under-valued in the mad race of development. As modern humans, we tend to forget or even recognise that our lives are interconnected with millions of other species on this earth.

At GPP, coexistence and biodiversity form the core principle of nature-living. Our aim is to let each species foster by creating aquatic ecosystems like ponds and lakes, arboreal ecosystems like trees and plants, terrestrial ecosystems like grasslands and other ecosystems that ensure ecological balance in our environment. We let biodiversity flourish and nurture a great food-chain that respects the laws of nature. From flowers, plants, herbs to insects, butterflies, bees, animals, fish, birds, amphibians and reptiles; the great coexistence of nature and the earth's great ecological balance is what we strive to nurture.



## ✦ ✦ ✦ SUSTAINABILITY PRINCIPLES OF GPP ✦ ✦ ✦



### Solar Energy

Solar Energy is a prime pillar of operation at GPP. We believe in marking our dwellings with solar panels and powering our dwellings with the energy that nature showers abundantly on us. This not only makes GPP self-sustainable, but also boosts the clean generation of electricity and reduces carbon footprint.



### Water Harvesting

We must be mindful in the use of water and also think of its replenishment. Hence, apart from developing water harvesting facilities, our designs ensure that groundwater replenishment is facilitated. We are overall mindful of reducing our water footprints during designing and developing our properties.



### Growing Food

Modern ways of growing food have a grossly negative impact on human body and mind. A seemingly insignificant step like nurturing own backyard garden would not only address this but would also ensure a steady supply of clean and organic produce for personal use. At GPP, our projects have designated areas where fruit orchards, kitchen gardens, as well as organic farming can be undertaken.



### Native Plantation

Native plants are guardians of local ecosystems. We, at GPP, aim to specially allocate sacred spaces where native flora is cultivated. Native flora is resilient and low-maintenance, and helps maintain soil quality. They further natural processes like pollination as they are the perfect habitats for the birds and bees, and many plants that thrive out of them; thus preserving many species of flora and fauna.



### Sustainable Design

Our quest for sustainable living has coaxed us to create designs that are ecologically smart. By creating designs that are in tandem with the sun path, wind directions and light conditions, our dwellings become harmonious with the climatic and weather conditions. This makes them pleasant to live in and, at the same time, reduces the load on energy consumption, thereby reducing our carbon footprint.



### Eco-friendly Materials

Many construction substances and materials for furnishings, lighting, paints etc. have a tendency to emit toxins that are detrimental to human health and well-being. We are extremely mindful of every resource we use and try our utmost best to use materials that are ecologically smart and minimise the harmful impact on the human body. Our preference for locally sourced material also minimises our carbon footprint and furthers our cause of sustainable construction and living.

## AMIT RAO - FOUNDER

What happens when a businessman finds his muse in nature and diversifies his profession to become an architect, agriculturist, ornithologist, a complete nature enthusiast and a value creator?

That is the life story of GPP founder Amit Rao.

Amit is renowned as the Group Director of the reputed Rao Group of Companies, which has been in existence for more than two decades now. He is also the founder of a decade old Hue Marcom Services that specialises in catering to the marketing communication needs of the International Education Sector.

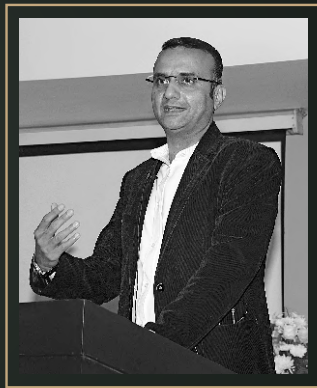
Green Panther Properties (GPP) took shape in his mind when hundreds of people in his circle started talking to him about his personal farm cum nature-living project - Shoonya. Shoonya is his dream and has been built passionately over a period of five years along with his architect friend. Recently, people have started knowing him for his experience and knowledge in sustainable living. Through GPP, Amit aims to translate the principles of coexistence and sustainability alongside luxury and aesthetic living on a larger scale to benefit like-minded people. The core concept of GPP that Amit has conceived has been meticulously presented in the form of this book.



## A. K. HIRANI - COFOUNDER

Founder and Director of renowned real estate development company Hivision Developers, A.K. Hirani has many accolades and success stories to his credit. After collaborating with Amit on GPP, Hirani is often seen scouting for the best piece of land that needs evolving and that has the potential to become soulful. It will not be an exaggeration to say that he puts his soul in the projects and is often known for his self-discipline and running-by-the-clock attitude. He has been calling shots in the real estate industry by juggling multiple kinds of projects requiring different scale of development; ranging from hotels to commercial offices to residential apartments. A self-learned person, Hirani believes in living close to nature and continuously evolving in the journey of soul-searching.

At GPP, he is like a beacon of light propelling the team in creating values



## GPP ONE POWER TEAM



Architect and Landscape Designer

Mr. Kaustubh Mankodi brings his unmatched expertise in architecture and landscape design to GPP One. He is an established Landscape Architect based in Ahmedabad. He has worked on a variety of landscape design as well as architecture projects. The spectrum of his work range from farm houses, residences, hotels to large scale landscape planning projects in Gujarat, Rajasthan and Karnataka. Over the past decade, he has gained immense experience in climate specific landscape design. He is a staunch believer of building with nature and for nature. Hence, his work reflects minimalism and sensitivity towards nature.

These qualities resonated with Amit 6 years ago and ever since, they have been working closely on Shoonya and GPP One.

Mr. Kirit Patel and Mr. Arpan Raval bring their wealth of experience in traditional construction technology and sustainability to GPP One. As multidisciplinary planning and project management consultancy firm, they will extend their superlative services in accomplishment of GPP One as a benchmark project.



Project Management Consultant



Green Building Consultant



Electrical Consultant



Plumbing Consultant

Mr. Varun Yadav and team brings the critical expertise in sustainable development and building science to GPP One along side helping GPP earn the Green Building Certification. Empaneled at organisations like AMC, GIFT City and IGBC, the firm has extended its expertise to 50+ projects since its inception in 2007 and has successfully completed more than 25 certifications.

Mr. Apoorva Parikh and team brings robust experience and expertise in furnishing integrated safety and security installations to GPP One. The company is dynamic in responding to the ecological criterions and designing solutions that give way to more open and green spaces for better overall fire safety.

Mr. Bharat Chauhan brings vast experience in designing robust plumbing infrastructure to GPP One. With a myriad of successful civil plumbing engineering projects under his belt at national and international level, he will extend his key expertise in designing plumbing infrastructure in accordance with self-sustainable and green building concepts.



Structural Design Consultant

Mr. Chintan Mehta and team brings substantial structural design experience of 550+ successful projects to GPP One. Over a short span of 6 years since its inception, the firm has empowered multitude of facilities including multi-storied commercial and residential structures, recreation centres, clubs, water parks, multiplexes, townships, hotels as well as institutional and industrial structures.



## JOIN US TO COEXIST WITH NATURE AND MAKE THE WORLD GREENER

### SITE ADDRESS:

GREEN PANTHER PROPERTIES | ONE  
ON NARMADA MAIN CANAL  
NEAR KADI DAM, SHIYAPURA  
KADI, MEHSANA - 382 721

(32 KILOMETRES FROM SHILAJ CIRCLE)

[TAP HERE TO VIEW LOCATION ON GOOGLE MAP](#)

### AHMEDABAD OFFICE:

GREEN PANTHER PROPERTIES LLP  
RAO CORPORATE HOUSE  
IN FRONT OF HEALTH ONE HOSPIITAL  
NEAR SHILAJ CIRCLE, SHILAJ  
AHMEDABAD - 380 059

☎ +91 93 888 888 26

✉ [amd@greenpanther.in](mailto:amd@greenpanther.in)

[TAP HERE TO VIEW LOCATION ON GOOGLE MAP](#)

### HYDERABAD OFFICE:

GREEN PANTHER PROPERTIES LLP  
PLOT NO. 26, LANE 6  
SAGAR SOCIETY, ROAD NO. 2  
BANJARA HILLS  
HYDERABAD - 500 081

☎ +91 79 953 848 88

✉ [hyd@greenpanther.in](mailto:hyd@greenpanther.in)

[TAP HERE TO VIEW LOCATION ON GOOGLE MAP](#)

✉ [contact@greenpanther.in](mailto:contact@greenpanther.in) | 🌐 [www.greenpanther.in](http://www.greenpanther.in) | Connect with Green Panther Properties on     





**GREEN  
PANTHER**  
PROPERTIES